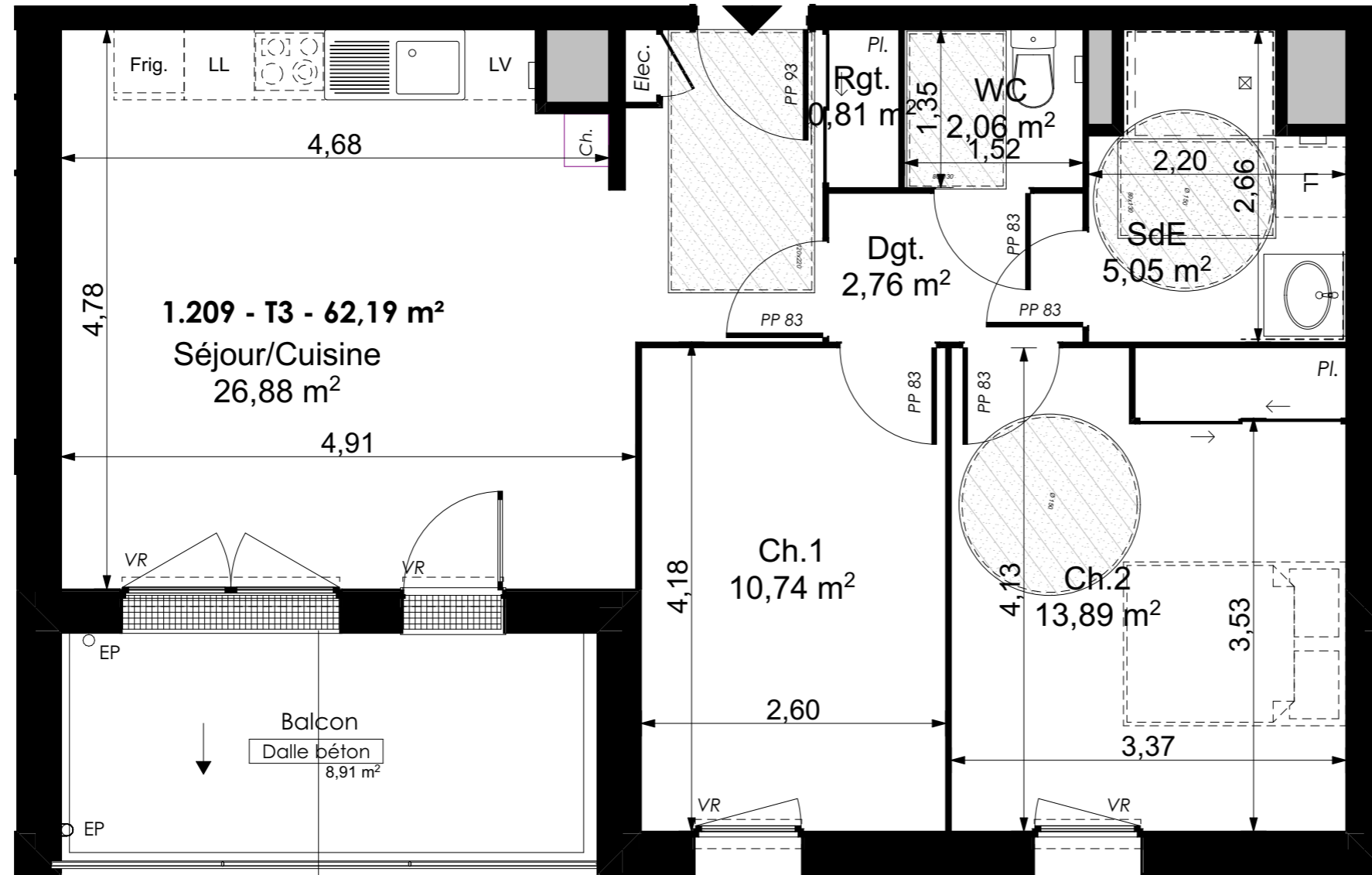
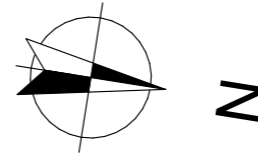


LES BORÉALES

DE SAINT-PRYVÉ



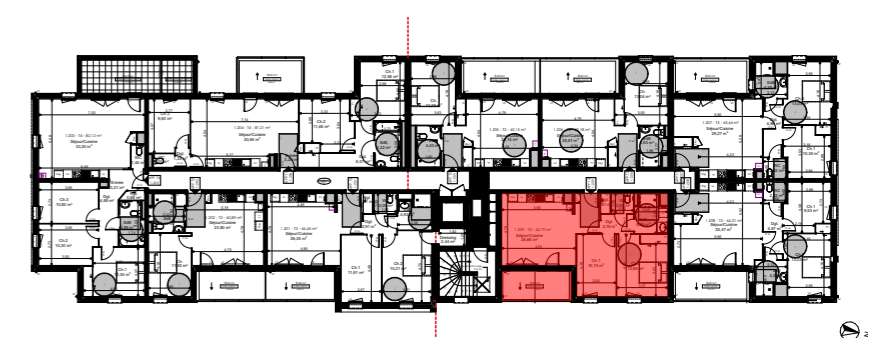
Valloire Habitat

Groupe ActionLogement

28 bis rue du Gros Raisin
45750 SAINT-PRYVE-SAINT-MESMIN

Les BoRéales de Saint-Pryvé

| TYPE T3 - LOGEMENT 1-209 R+2 | | |
|---------------------------------|-------------|----------------------|
| Séjour/Cuisine | | 26,88 m ² |
| Dgt | | 2,76 m ² |
| WC | | 2,06 m ² |
| Rgt | | 0,81 m ² |
| SdB | | 5,05 m ² |
| Ch. 1 | | 10,74 m ² |
| Ch. 2 | | 13,89 m ² |
| Total surfaces habitables | | 62,19 m ² |
| Annexes | Surf. Utile | |
| Balcon | | 8,91 m ² |
| Total surfaces Annexes | | 8,91 m ² |
| TOTAL SURFACES | | 71,10 m ² |



| | |
|--------------------------|----------|
| 15/11/2022 | Indice C |
| Ech : 1:50 | |
| 0.00 0.50 1.00 2.00 3.00 | |